

5 % % %

% %

% % % %

--	--	--	--

CH ₄	CH ₄	/	/	/
	CH ₄	/	/	/
CO ₂		/	/	/

CO₂

4.					

%

.....
.....
.....
.....
.....
.....

EMC /S/MCD.96/RT/hg.(en-)
NB0.000008871 0 595.3

.....
.....
.....
.....
.....



.....

.....

.....

.....

.....

.....

1

1.1

1.2

$$\begin{array}{r} 2 \\ 2 \\ + \\ + \\ 2 \\ 2 \\ 9 \cdot \gamma^{\hat{E} \hat{I} \hat{Z} \hat{a}} \\ 2 \end{array}$$

1.3

%

0

* %

* %

* %

2

2.1

2.2

2.3

%%

		"	

		"	

2.4

%

3

3.1

!!

|

! !%

%

	% %	2 +		
		2 % 0 + +		
		2 + 0 %		

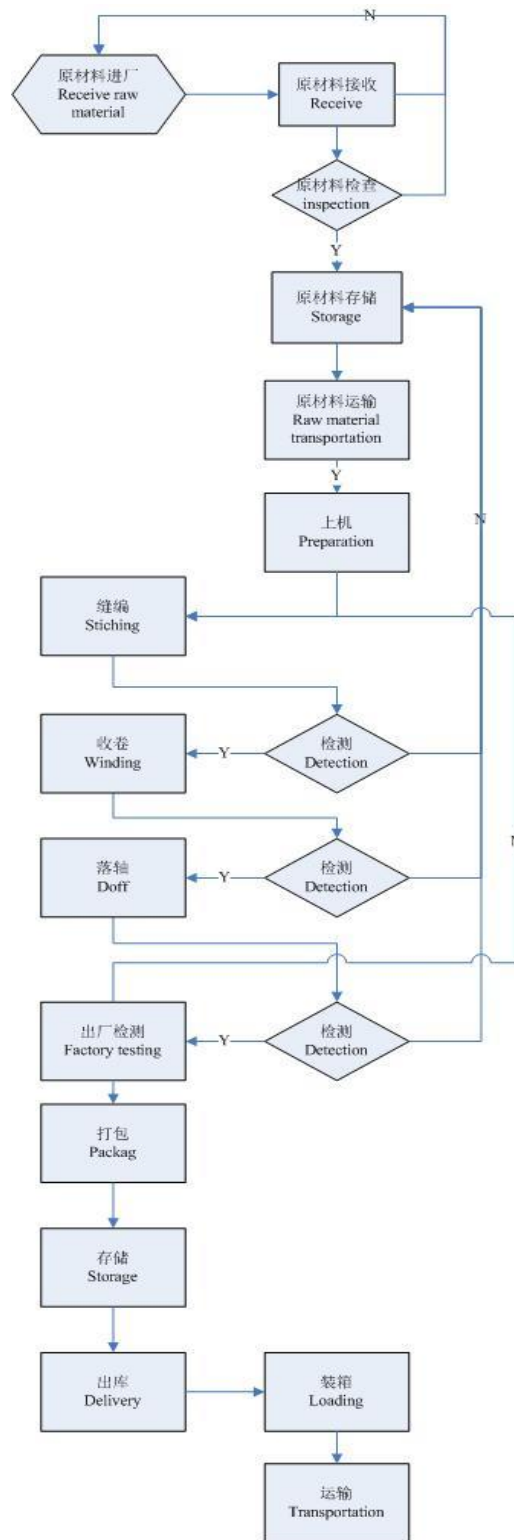


		+ -1 0		
		/ ((%		
		/ (%		
		(
		+ -1 /		
		+ -1		
		/ (%		
		/ (%		
		(0		
		0		
		+ *		
		+ * *		
		(

--	--	--	--	--	--	--

		2				
				-,0		
		+	+	(2		
		0				
		*				
)				
		0) *				

!!



--	--

	% %%	% %%

		%%	%%	

3.2

!%

				/
2	/	/	/	[1]
+	/	/	/	[2]
+	/	/	/	[3]
2	/	/	/	[4]
				/
				/

2

+

+
2

3.3

$$\text{GHG} = \text{CO}_{2-} + \text{CO}_{2-} + (\text{CH}_4 - \text{CH}_4) \times \text{CH}_4 - \text{CO}_{2-} + \text{CO}_{2-} + \text{CO}_{2-} \quad 1$$

E_{GHG}				CO_2e
E_{CO_2}		CO_2	tCO_2	
E_{CO_2}			CO_2	tCO_2
E_{CH_4}		CH_4	tCH_4	
R_{CH_4}	CH_4		tCH_4	
GWP_{CH_4}			GWP_{CH_4}	21
R_{CO_2}			tCO_2	
E_{CO_2}		CO_2	tCO_2	
E_{CO_2}		CO_2	tCO_2	
!!	6 B%			
		CO_2		
CO_{2-}	$=$	$($	\times	\times
			\times	$\frac{44}{12}$)
				2
E_{CO_2}		CO_2		
i				
AD_i	i			
		Nm^3		
CC_i	i			$/$
		$/ Nm^3$		

OF_i

i

$0\sim 1$

= (

!! 6

!! 6

CH₄

!! 6 B%

CO₂

!!

= × 5

E t

AD MWh

EF tCO₂/ MWh

!!

= × 6

E

t

	0) *
	1
	1
	1
	1

1	

!! !%

!!!

!!! 6

CH₄

!!! 6B%

CO₂

!!!

! !%

		tC/GJ	(%)
		0.0153	99
		tC/GJ	(%)
		0.0153	99

! !%

	0.7035	0.7035
	tCO ₂ /MWh	
	2012	
	2021	

! !%

	0.11	0.11
	tCO ₂ /GJ	
	2021	

!!

!!! 6 B%

!!!

6 B%

3-16

	MWh GJ	MWh GJ	MWh GJ	CO ₂ tCO ₂ /MWh tCO ₂ / GJ	tCO ₂
			0	0.7035	

!!!

3-17

			CO _{2e}
CO ₂		29.11	29.11
CO ₂		/	/
CH ₄		/	/
CH ₄	CH	/	/
	CH	/	/
	CH	/	/
CO ₂		/	/
CO ₂		13783.05	13783.05
CO ₂			
		/	/
CO _{2e}		CO ₂	29.11
		CO ₂	

!!

3.5

3.6

3.7

4

4.1

4.2

!%

		tCO ₂ e	tCO ₂ e	%
CO ₂		29.11	29.11	0
CO ₂		/	/	/
CH ₄		/	/	/
CH ₄	CH ₄	/	/	/
	CH ₄	/	/	/
	CH ₄	/	/	/
CO ₂		/	/	/
CO ₂		13783.05	13783.05	0
CO ₂				0

		/	/	/
	CO ₂	29.11	29.11	0
	CO ₂			0

!%/%

4.3

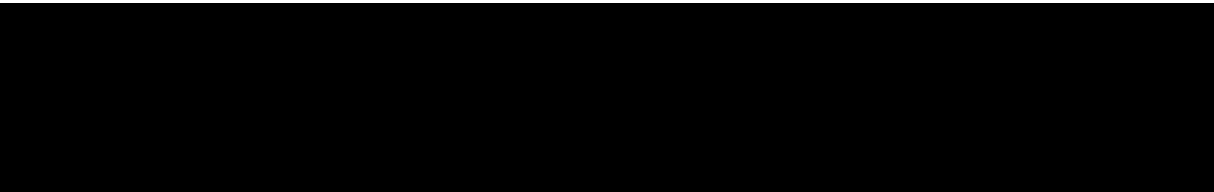
		2020	2021	
		tCO ₂ e	tCO ₂ e	%
CO ₂		21.18	29.11	
CO ₂		/	/	/
CH ₄		/	/	/
CH ₄	CH ₄	/	/	/
	CH ₄	/	/	/
	CH ₄	/	/	/
CO ₂		/	/	/

CO ₂	13735.62	13783.05	
CO ₂	1982.56		15.65%
	/	/	/

CO₂

21.18

29.11



2

3
